

# APAPRO® Professional Homecare

## nano-hydroxyapatite remineralizing toothpaste

Professional Dental Treatment Care with nano<mHAP>\*

### Homecare

- ✓ protection from caries
- ✓ relief from sensitivity
- ✓ remineralization
- ✓ naturally whiter teeth

120g

Remineralizing toothpaste professionally recommended for use daily at home



### In office

- ✓ after professional tooth cleaning
- ✓ treatment of chalky teeth (MIH)
- ✓ after bleaching
- ✓ after scaling
- ✓ after removal of brackets
- ✓ for general protective use

55g

Remineralizing treatment paste for use by dental professionals



### \*Nano<mHAP>

SANGI's original active ingredient nano<mHAP> is a non-abrasive form of hydroxyapatite, which was developed specifically for oral care use as early as the 1970s and is the only hydroxyapatite officially recognized by the Japanese government as an anti-caries agent ('Medical Hydroxyapatite'), since 1993.

### Hydroxyapatite

The major component of bone and teeth, hydroxyapatite is a safe biocompatible calcium phosphate, used widely in medical and dental applications.

Enamel (translucent)

97% Hydroxyapatite

Dentin (ivory colored)

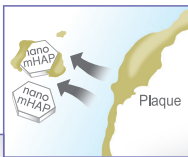
70% Hydroxyapatite



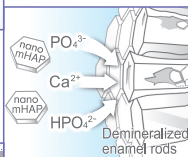
### Nano<mHAP> clinically confirmed anti-caries & anti-sensitivity functions

Nano<mHAP> protects against decay and makes teeth cleaner, smoother and stronger by

- ① adhering to and reducing plaque and plaque bacteria;

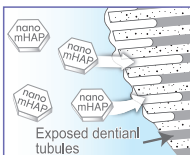
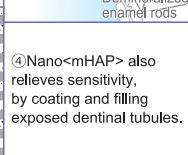


- ② filling and repairing surface microfissures;



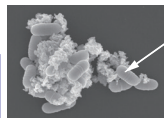
- ③ remineralizing incipient caries below the enamel surface.

- ④ Nano<mHAP> also relieves sensitivity, by coating and filling exposed dentinal tubules.

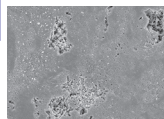


And by restoring smoothness and mineral density to the enamel, nano<mHAP> leads to naturally whiter teeth.

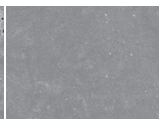
### Examples of laboratory data\*



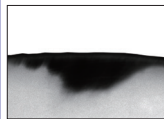
(a) <mHAP> adhering to *S. mutans* decay-causing bacteria



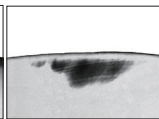
(b) Abraded enamel



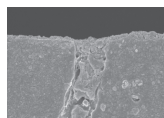
(c) After treatment with <mHAP>



(d) Incipient caries (demineralization)



(e) After treatment with <mHAP> (remineralization)



(f) Dentin cross section showing occluded tubule and surface coating by <mHAP>

### Indications for use:

For best effect from nano<mHAP>

- 1) place a small amount (1 - 1.5cm) on a toothbrush;
- 2) brush teeth and gums gently and meticulously for about 3-5 minutes, ideally after each meal (3 times/day);
- 3) rinse lightly and spit out after brushing.

### Advice to users:

\*In case of any rash or irritation noticed after using this product, discontinue use and consult a doctor, dentist or pharmacist.

\*As this product is a dentifrice, please do not deliberately swallow it.

\*Rough brushing can damage teeth and gums. Consult your dentist or oral hygienist regarding the correct way of brushing.

### Storage:

\*Replace cap firmly after use and store the product in a cool, clean place, out of reach of small children.

